

# CERAMIC VENTILATED FACADES SYSTEMS





# CERAMIC VENTILATED FACADES SYSTEMS



# CHOOSE THE EXTERIOR CLADDING THAT CONTRIBUTES TO A GREENER FUTURE.

A facade is far more than just the protective shell of a building. Its design not only characterizes the building itself, but also influences – often visible from far away – the urban environment. Being one of the most durable and easy to clean materials, ceramic ventilated cladding is an indisputable choice for extreme northern climates. The appealing design, innovative system and high-quality German craftsmanship, KeraTwin® K20 has positioned our supplier Agrob Buchtal as one of the world leaders in contemporary architecture.

The variety of colours, formats and surface finishes, KeraTwin® K20 offers the architect enormous freedom of design. As diverse fastening alternatives ensure technical and structural versatility, this system offers the appropriate solution to any challenge even on difficult bases.



# THE PERFECT SOLUTION: CURTAIN-TYPE, REAR-VENTILATED CERAMIC FACADES



SUN AND VISUAL  
PROTECTION



LESS WASTE ON SITE



SUSTAINABILITY



VARIETY OF DESIGN



PROTECTION AGAINST  
HEAT AND COLD



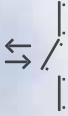
ECONOMIC FEASIBILITY



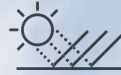
FIRE SAFETY



RESISTANCE TO FROST



REPLACING  
INDIVIDUAL PANELS



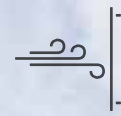
LIGHT AND COLOURFAST



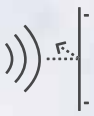
ANTI-GRAFFITI



EARTHQUAKE-SAFE



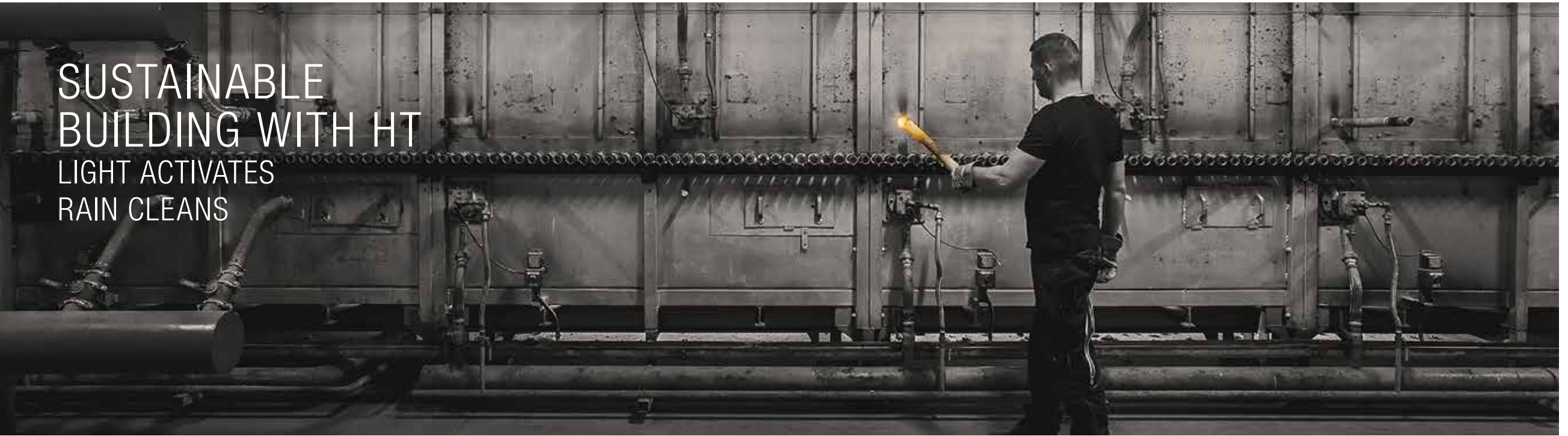
DESIGN LOADS



NOISE PROTECTION



# SUSTAINABLE BUILDING WITH HT LIGHT ACTIVATES RAIN CLEANS



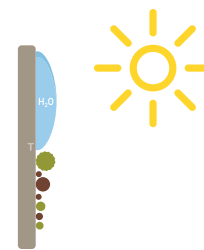
## HT TREATMENT: FACADES WITH SELF-WASHING EFFECT

The ceramic ventilated cladding is a staple for commercial building facade projects. Being one of the most **durable** and **easy to clean** materials, it is an indisputable choice for extreme northern climates. KeraTwin® K20 ceramic panels are all coated with **the innovative HT (hydrophilic tile) coating technology**, which has exceptional antibacterial properties. The ceramic ventilated cladding stands out for its **contribution to the environment** and for taking a step towards **sustainable development**. Each building contributes to its own microclimate and uses light to actively breakdown pollutants, as well as industrial fumes and exhaust fumes.

Thanks to HT treatment and its antibacterial effect, algae, fungi and moss are decomposed. As soon as it rains, dirt and impurities are simply washed away by the self-washing effect in the case of glazed facade ceramics. This saves on maintenance costs in the life cycle of a building.

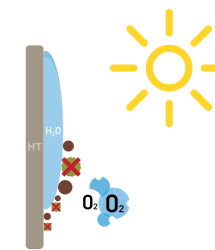
1

The surface tension of the water is overcome. A thin water film forms.



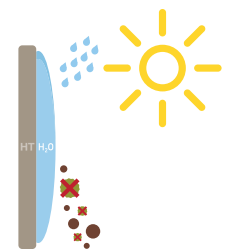
2

By the action of the light, the catalyst activates oxygen. Microorganisms, algae, fungi and moss are decomposed.



3

When it rains, dirt and microorganisms are simply infiltrated and removed.



# CERAMIC FACADE SYSTEMS FOR SUSTAINABLE RENOVATION

Ceramic facade systems installed on the old facade like a second shell provide a sustainable, energy-efficient and aesthetic solution. In this way, diverse energy-saving requirements can be met, as the gap between the old and new facades provides space for insulation layers of any thickness. In addition, curtain-type facades offer ideal conditions for the visual enhancement of buildings, as they also allow for a building grid independent of the original structure. Thanks to the decoupling of the outer shell from the building structure, the living spaces remain cool in the summer and warm in the winter. The positive effects on quality of life are another benefit of this type of renovation.

## LAURIE-EVE-CORMIER AQUATIC COMPLEX

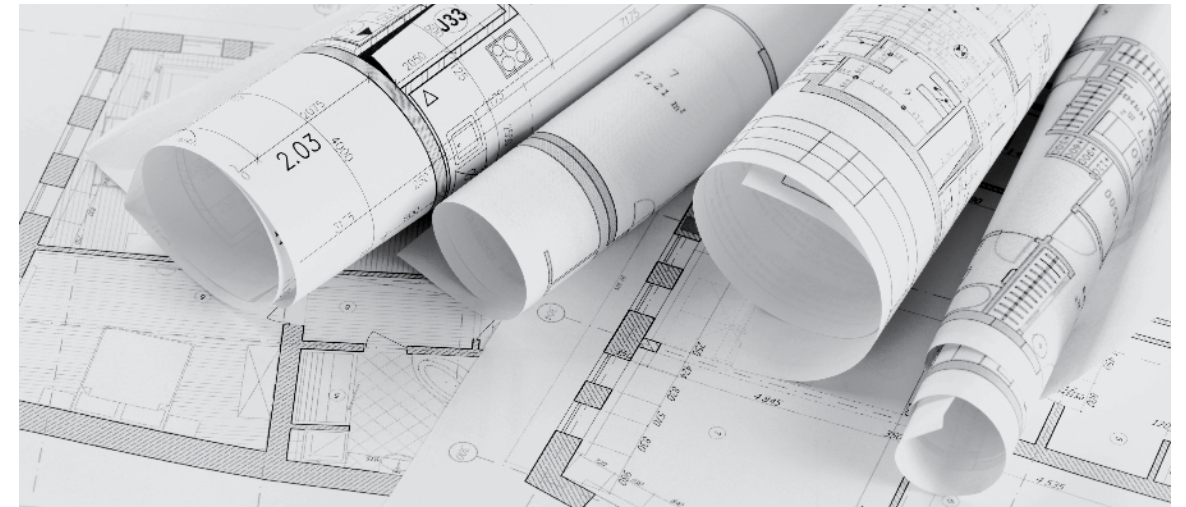


BEFORE



AFTER

# SERVICE AND EXPERTISE



A reference in the world of design and architecture, Ceragres offers complete and diversified range of cutting-edge products, as well as technical support and a high level of service.

Ceragres product specialists facilitate the specification of Agrob Buchtal's KeraTwin® K20 system by providing technical support from the design phase to product installation. For more information, contact our team of experts.

- Preliminary meetings to assess needs
- Budget study
- Samples
- Support to architects and contractors
- Network of specialized and experienced installers
- Technical assistance of the manufacturer
- 10-year manufacturer warranty



# CONDOMINIUMS O CARTIER



Location:  
LAVAL

Architects:  
CONSORTIUM  
LUPIEN + MATTEAU /  
BARIN ARCHITECTURE + DESIGN

System:  
KERATWIN® K20  
—  
HT Treatment

Colors:  
Natura 415 N vulcan-grey H  
Spectraview 4230 glacier-white, glossy H

Quantity:  
55,000 ft<sup>2</sup>



# LAURIE-EVE-CORMIER AQUATIC COMPLEX

Location:  
BOUCHERVILLE

Architects:  
CONSORTIUM  
RIOPEL + ASSOCIÉS ARCHITECTES /  
POIRIER FONTAINE ARCHITECTES

System:  
KERATWIN® K20  
—  
HT Treatment

Colors:  
Spectraview 150 lemon-yellow H  
Spectraview 4230 glacier-white, glossy H  
Spectraview Blue Series

Quantity:  
6,500 ft<sup>2</sup>







# MAINTENANCE AND OPERATIONS CENTER – STO

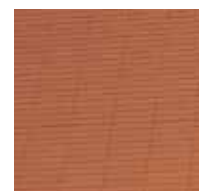
Location:  
GATINEAU

Architects:  
COBALT ARCHITECTES

System:  
KERATWIN® K20  
—  
HT Treatment

Colors:  
Spectraview 4230 glacier-white,  
glossy H  
Spectraview 6271 BLUE 1H

Quantity:  
33,000 ft<sup>2</sup>



# CCQ HEADQUARTERS

Location:  
MONTREAL

Architects:  
LEMAY

System:  
KERATWIN® K20  
—  
HT Treatment

Colors:  
Natura 415 N vulcan-grey H  
—  
Natura 403 red H

Quantity:  
62,000 ft<sup>2</sup>



# ORDRE DES INFIRMIÈRES ET INFIRMIERS DU QUÉBEC – OIIQ

Location:  
MONTREAL

Architects:  
LEMAY



System:  
KERATWIN® K20  
—  
HT Treatment

Colors:  
Spectraview 4230 glacier-white, glossy H

Quantity:  
13,000 ft<sup>2</sup>



# STINSON BUS GARAGE – STM

Location:  
MONTREAL

Architects:  
LEMAY

System:  
KERATWIN® K20  
—  
HT Treatment

Colors:  
Spectraview 150 lemon-yellow H  
—  
Natura 415 N vulcan-grey H

Quantity:  
25,000 ft<sup>2</sup>



# CENTRE SANTÉ RACINE

Location:  
CHICOUTIMI

Architects:  
LES MAÎTRES D'ŒUVRE  
HOVINGTON GAUTHIER  
ARCHITECTES

System:  
KERATWIN® K20  
—  
HT Treatment

Colors:  
Spectraview 4230 glacier-white, glossy H

Quantity:  
11,000 ft<sup>2</sup>



# AQUA COMPLEX

Location:  
DRUMMONDVILLE

Architects:  
CONSORTIUM  
POIRIER FONTAINE ARCHITECTES /  
BILODEAU BARIL ASSOCIÉS

System:  
KERATWIN® K20  
—  
HT Treatment

Colors:  
Spectraview 6272 BLUE 2H

Quantity:  
3,750 ft<sup>2</sup>



# CONCEPTION BAY SOUTH TOWN HALL

Location:  
NEW FOUNDLAND

Architects:  
JOHN HEARN ARCHITECT INC.

System:  
KERATWIN® K20  
—  
HT Treatment

Colors:  
Spectraview 4234 chalk-white H

Quantity:  
5,200 ft<sup>2</sup>

# SURFACES FOR KERATWIN® K20

KeraTwin® K20 panels offer a variety of surfaces such as gloss, silky-matt and natural finishes. In addition, digital printing technology provides access to the production of stone, wood and metal looks.

# FORMATS FOR KERATWIN® K20

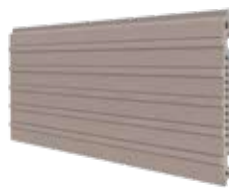
Length: up to 1,800mm (in 1mm steps)	Height: up to 600mm	Thickness: 20mm	Weight: 32kg/m <sup>2</sup>
--	------------------------	--------------------	--------------------------------



SMOOTH



GROOVED PANEL



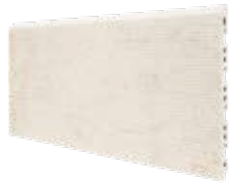
GROOVED PANEL POSITIVE



STRIPY PATTERN



SHED PROFILE



BRUSHED SURFACE



SINE WAVE



NEW WAVE

Length (mm)	up to 900		up to 1,200		up to 1,500		up to 1,800								
Height (mm)	150	175	200	225	250	275	300	325	350	375	400	450	500	550	600

Schematic diagram: production-related deviations possible in individual cases; exact panel cross-section on request.

In addition to the variants shown, other individual developments are possible on request. Due to the different panel cross-sections, the choice of fastening system depends on the individual case.



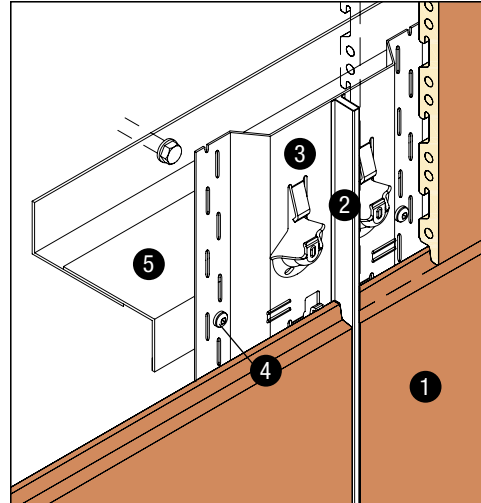


# KERATWIN® K20 – FASTENING WITH VERTICAL SYSTEM RAIL

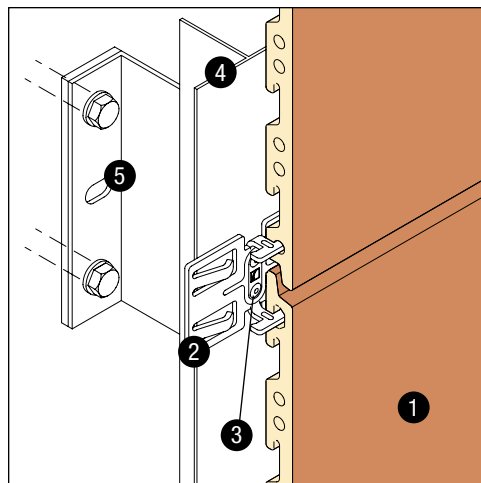
## OMEGA SYSTEM

- OMEGA rail with pre-punched and pre-aligned attachment hooks
- Perfect alignment of the panels thanks to the vertical joint profiles
- Integrated corner profiles

- 1 FACADE PANEL KERATWIN® K20
- 2 VERTICAL JOINT PROFILE K20, ARTICLE 640
- 3 OMEGA SYSTEM RAIL K20, ARTICLE 627
- 4 STAINLESS STEEL SCREW, ARTICLE 659
- 5 ADJUSTABLE Z-BAR (TYPICAL SUPPORT SUPPLIED BY OTHER MANUFACTURERS)



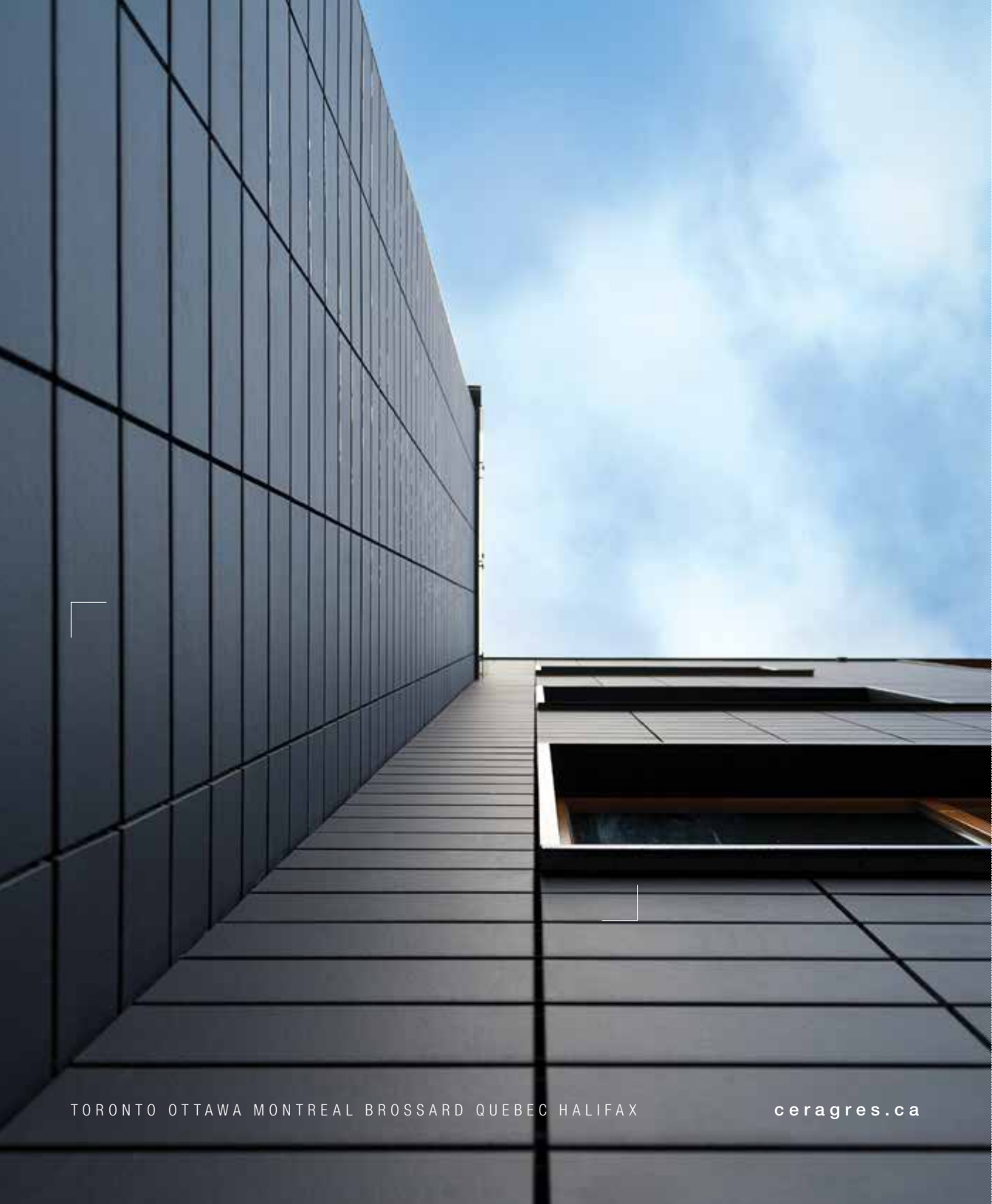
CHOOSE THE EXTERIOR CLADDING THAT CONTRIBUTES TO A GREENER FUTURE.



## CLAMP SYSTEM

- Panels can be mounted in any direction: horizontal, vertical, on an angle or soffit

- 1 FACADE PANEL KERATWIN® K20
- 2 TWIN-CLAMP K20, ARTICLE 680
- 3 STAINLESS STEEL BLIND RIVET, ARTICLE 675
- 4 VERTICAL BEARING PROFILE (BASIC SUBSTRUCTURE)
- 5 WALL BRACKET (BASIC SUBSTRUCTURE)



TORONTO OTTAWA MONTREAL BROSSARD QUEBEC HALIFAX

[ceragres.ca](http://ceragres.ca)