

CERAMIC VENTILATED FACADE SYSTEMS

 IMOLA
TECNICA

 CERAGRES

Imola Tecnica is an Italian company located near Bologna in the Emilia-Romagna region. For more than 10 years, Imola Tecnica has focused its efforts on the development of stoneware porcelain products for ventilated facades. Four systems are now available to provide modern and innovative solutions.

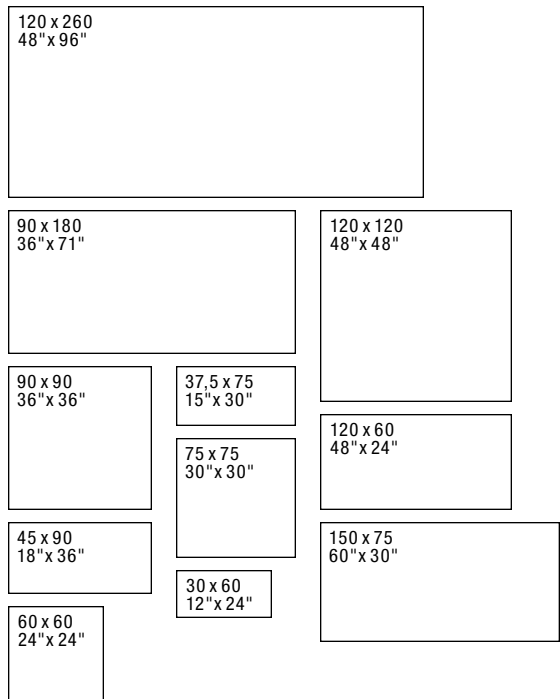
Imola Tecnica and the technical team of Ceragres assist the designer throughout the process and provide customized technological solutions. The modularity of the cladding follows the contours of the building. The sub-structure for the assembly stages is then developed.

FORMATS

Stoneware porcelain is available in several modular and complementary formats.

Thickness: 10 mm • **Weight:** 5 lb/ft²

A fibreglass mesh is applied to the back of each panel to provide additional strength and facilitate drilling, cutting and handling.



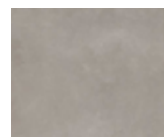
LOOK

Clean lines, natural surfaces, neutral tones, warm and cool shades and a combination of looks such as contemporary, wood, cement, metal, stone and marble are available in Imola Tecnica's stoneware porcelain collections.

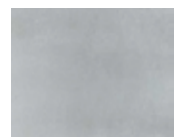
Porcelain is a completely natural product, without any volatile compounds and 100% recyclable.



WOOD



CONCRETE



CONTEMPORARY



MARBLE



METAL



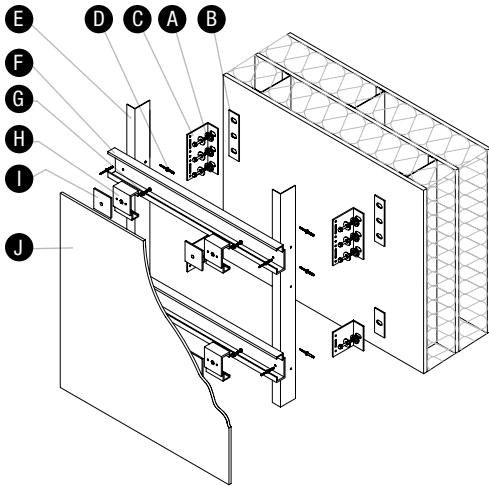
STONE

SYSTEMS

For the Canadian market, Ceragres offers the following two systems for ventilated facade projects. Other systems are also available depending on the project requirements.

IT-S SYSTEM

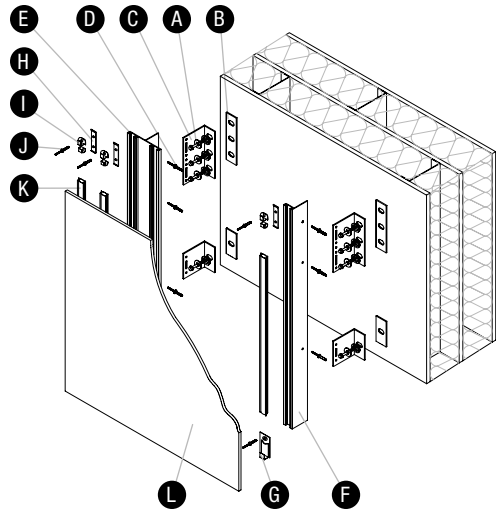
This invisible fixing system is a combination of rails on which aluminium anchor studs are fixed, which are themselves applied to porcelain tiles by means of stainless-steel expansion plugs (KEIL). Once the tiles are assembled, the system provides the possibility of achieving variable joints through high-precision millimetre adjustment screws.



- A** BOLT
- B** TERMOSTOP
- C** L-BRACKET
- D** RIVET
- E** L-VERTICAL MULLION
- F** C-HORIZONTAL PROFILE
- G** BOLT
- H** ADJUSTABLE FASTENER WITH LOCKING SCREW
- I** EPDM
- J** TILE

IT-M SYSTEM

This system with visible fixing is equally effective and more economical. A special pre-painted stainless-steel plate is installed on a combination of rails, using AISI 316 stainless-steel clips to fix the cladding slabs. The clips are the same colour as the chosen tiles. The system thus composed will have a joint of 8 mm between the slabs.



- A** BOLT
- B** TERMOSTOP
- C** L-BRACKET
- D** RIVET
- E** L-VERTICAL MULLION
- F** T-VERTICAL MULLION
- G** BASE CLIP
- H** SPACER
- I** JOINT CLIP
- J** RIVET
- K** EPDM PROFILE
- L** TILE

Download more technical documents at imolatecnica.it



COLLEGE OF BUSINESS STUDIES PAAET

Location:
MADINAT, KUWAIT

System:
STRUCTURE IT-S INVISIBLE
STRUCTURE IT-M APPARENT

Quantity/Format:
80000 sq m – 50x100 cm



NORTH SEA SHIPPING HEADQUARTERS

Location:
BAKKASUND, NORWAY

System:
STRUCTURE IT-S INVISIBLE

Quantity/Format:
1800 sq m – 120x60 cm



UNIVERSITY OF NEBRASKA MEDICAL CENTER

Location:
OMAHA, UNITED STATES

System:
STRUCTURE IT-S INVISIBLE

Quantity/Format:
5000 sq m – 120x120 cm



FORMER POLICE OFFICE

Location:
SWEDEN

System:
STRUCTURE IT-M APPARENT

Quantity/Format:
4000 sq m – 60x60 cm



TORONTO OTTAWA MONTREAL LAVAL BROSSARD QUEBEC HALIFAX

ceragres.ca