

fitile

ITALIAN TILES DESIGN

STONY

Lotte di toni, equilibri perduti, principi che decadono, inattesi colpi di tamburo, grandi domande, aspirazioni apparentemente insensate, impulso, nostalgia e desiderio in apparenza lacerati, catene e vincoli distrutti che uniscono opposti e contraddizioni: questa è la nostra armonia.

[Wassily Kandinsky, Lo spirituale nell'arte]

The contrast of tonalities, loss of balance, dying "principles", like the unexpected beat of a drum, weighty questions, aimless strife, lost impulses and longings, severed chains or ties, the antitheses and contradictions comprise the harmony of our day.

[Wassily Kandinsky, Concerning the spiritual in art]

STONY

1 formato [9x30]

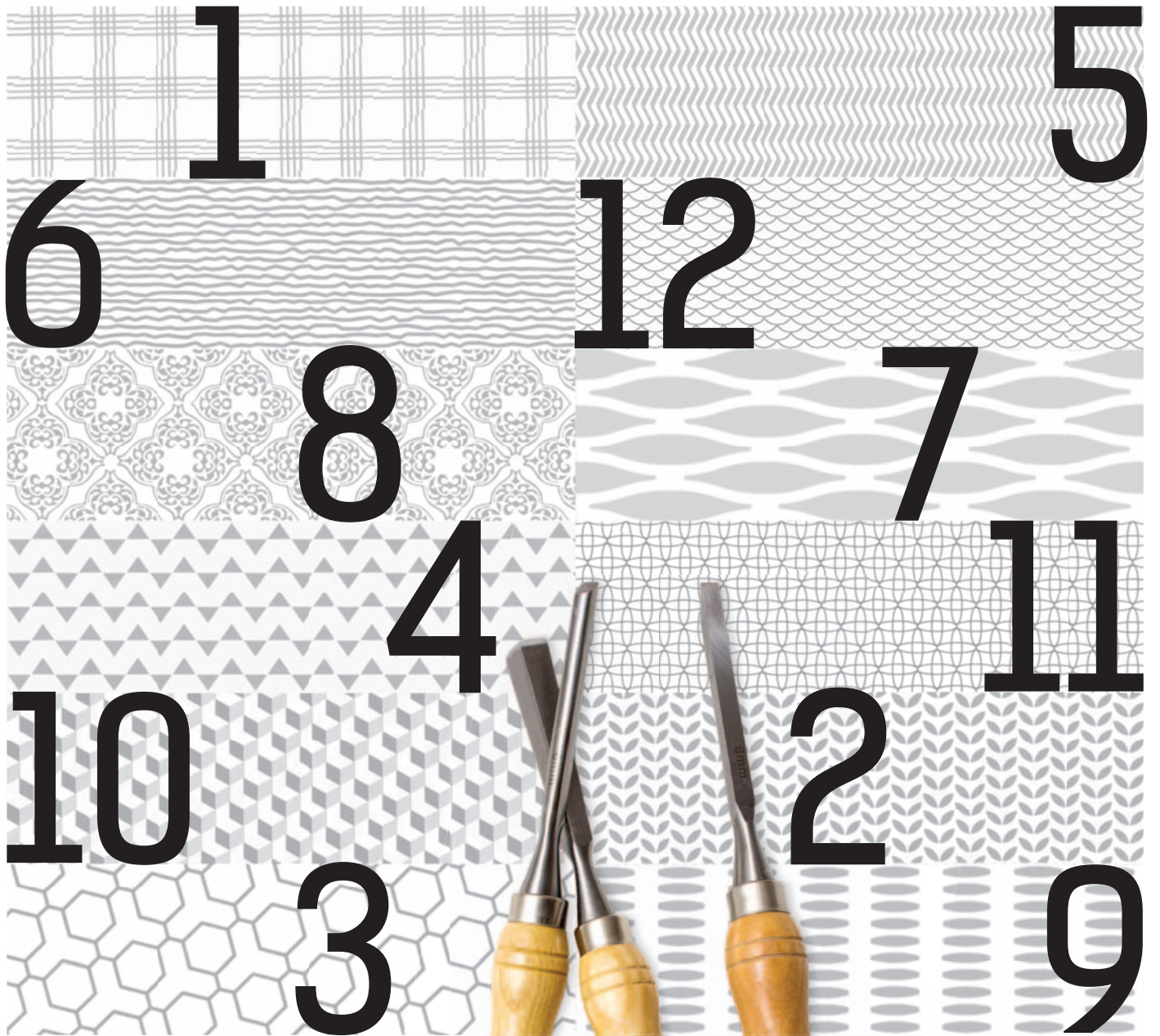
5 colori

12 pattern casuali

1 size [3,54x11,81]

5 colors

12 random patterns



STONY

Stony, pietra. Evocata nel nome, evidente alla vista, ruvida al tatto.

Un progetto ispirato alla terra, alla sua crosta, al guscio millenario; all'elemento pietroso, primordiale, alla roccia calcarea della pietra leccese, alla forza della basaltina, al monolitico bluestone.

Sabbia, Grafite, Lava: tre colori, tre superfici materiche. Consistenze e opacità ancestrali che si fanno contemporanee, esaltate da effetti d'incisione o decorazioni digitali tono su tono. Dodici pattern che creano tridimensionalità lievi o marcate, disponibili anche nei colori White e Black.

Segni che scavati o a rilievo assumono forma di linee, di curve, di angoli e che sublimano nella posa in opera sempre differente. La collezione Stony, infatti, è proposta unicamente in un mix casuale di pattern, aprendo il rivestimento murale a una molteplicità di combinazioni. Una ricchezza di possibilità che crea equilibri tra caos e armonia.

Stony è un progetto del marchio Fittile, dal latino fictilis, "fatto di argilla": nome che omaggia la tradizione dell'arte ceramica italiana.

Stony, stone. Evoked by its name, evident when seen, coarse when touched.

A project inspired by the earth, its crust, its millennial shell; a project moved by the pebbly element, primordial, by the calcareous rock from Lecce, the strength of the basalt, the monolithic bluestone.

Sabbia, Grafite, Lava: three colours, three material surfaces. Ancestral textures and opaqueness that become contemporary, exalted by engraved effects or digital decorations tone on tone. Twelve patterns that create light or heavy 3D effects, also available in White and Black.

Hollowed or remarked signs that become lines, curves, angles and that climax with an always different installation. Indeed, Stony is proposed entirely as a casual mix of patterns, opening up wall coverings to endless combination possibilities. Infinite opportunities that create a balance between chaos and harmony.

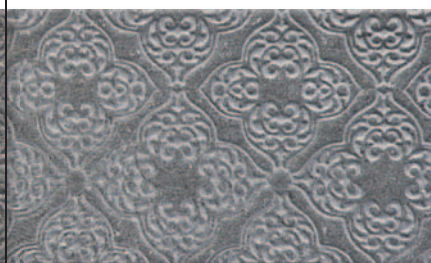
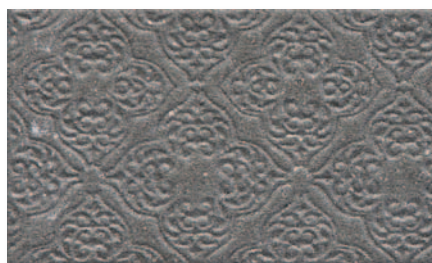
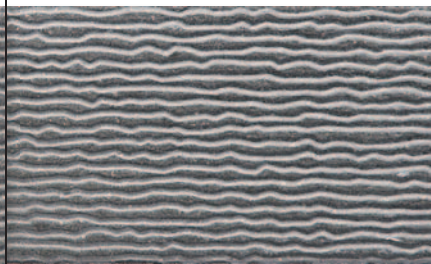
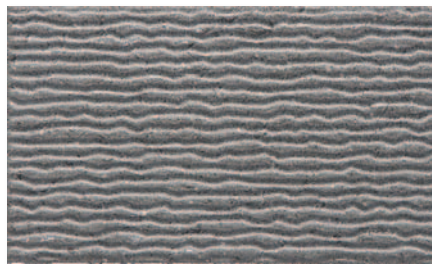
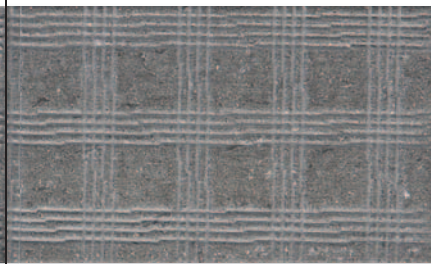
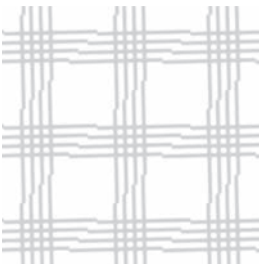
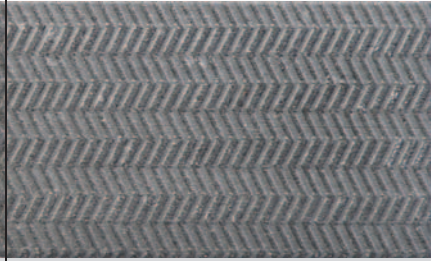
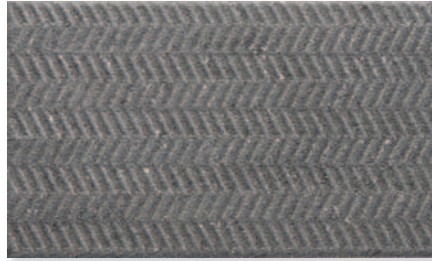
Stony collection is branded Fittile, from the latin word fictilis which means "made of clay". The name aims at honoring the millenary tradition of the italian art ceramic.

STONY PATTERN

SABBIA
GRAFITE
LAVA
WHITE
BLACK

STONY DECORATION

SABBIA
GRAFITE
LAVA

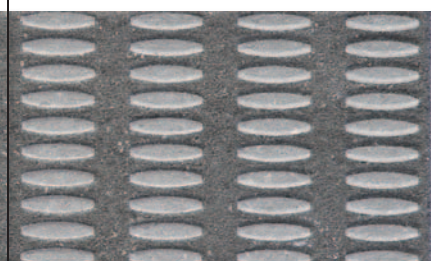
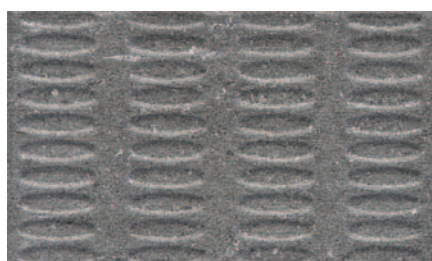
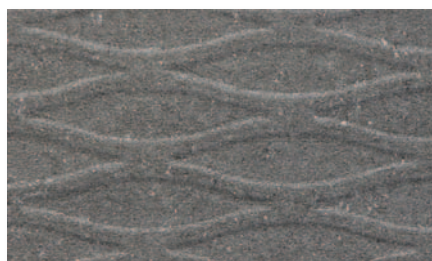
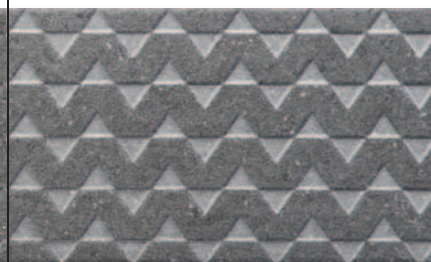
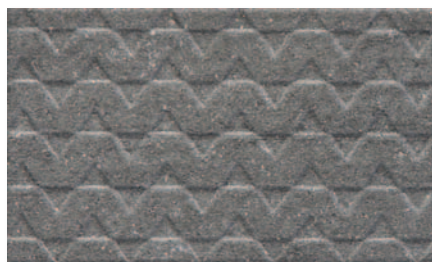
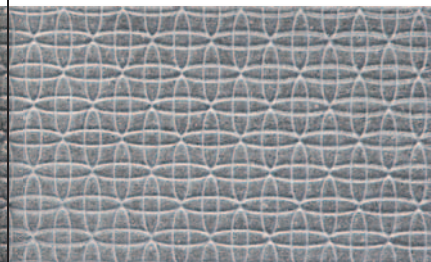
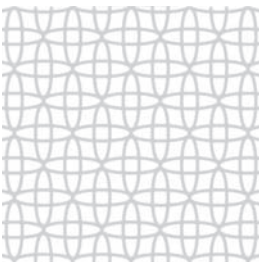
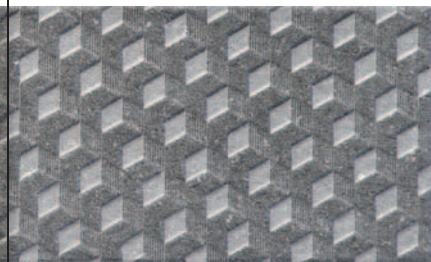
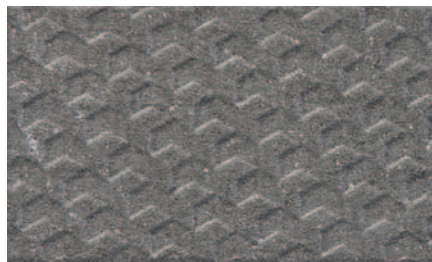
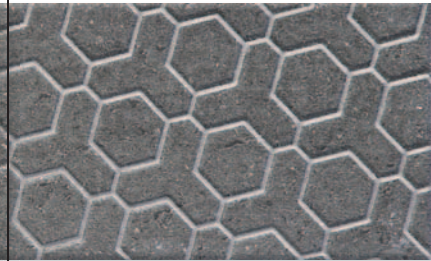
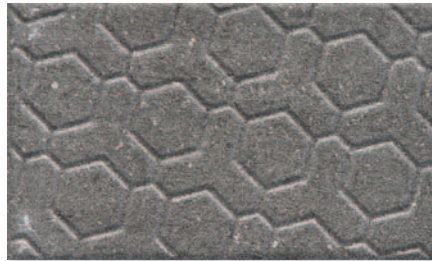


STONY PATTERN

SABBIA
GRAFITE
LAVA
WHITE
BLACK

STONY DECORATION

SABBIA
GRAFITE
LAVA



STONY DECORATION
SABBIA





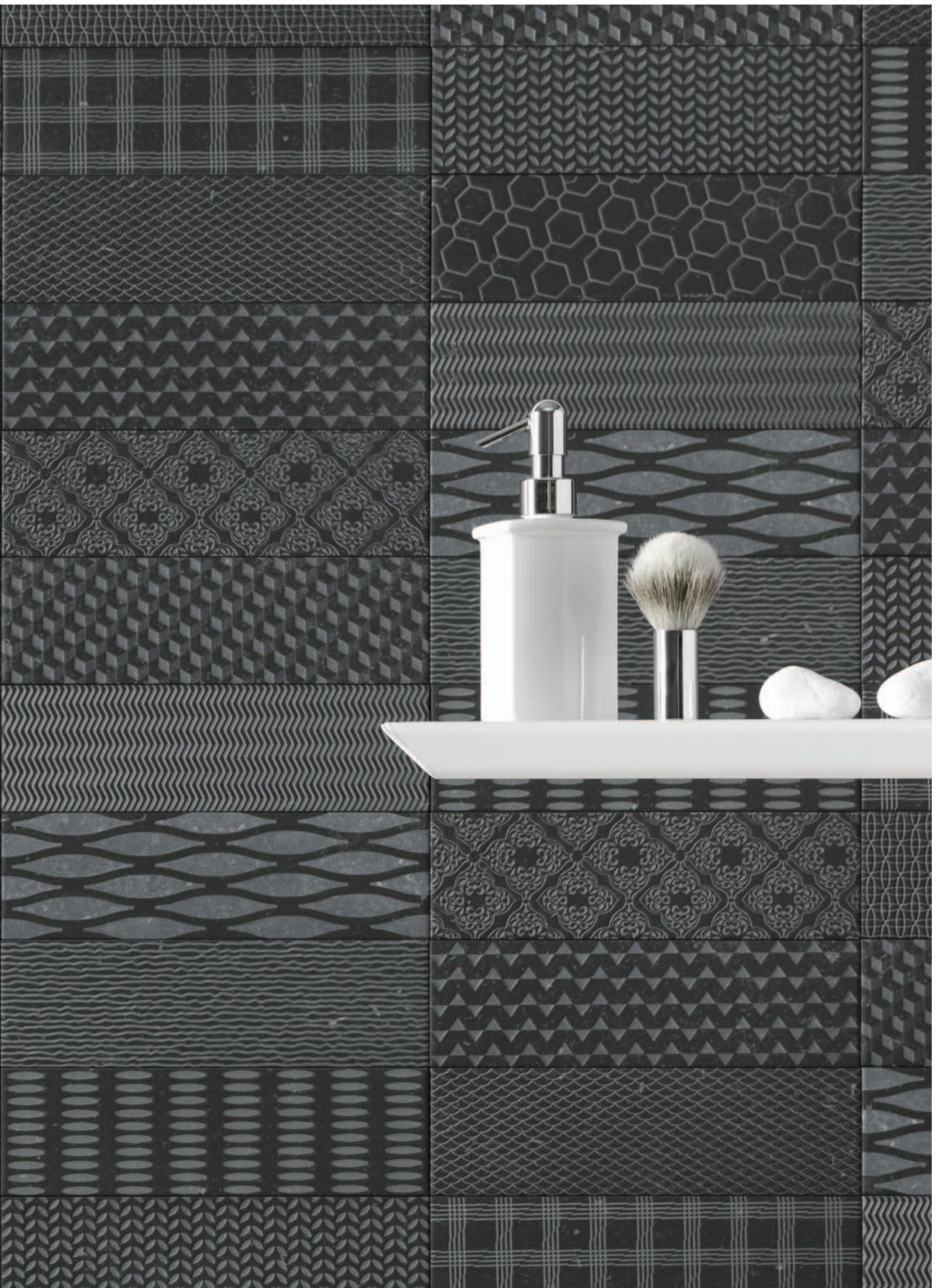
STONY PATTERN
GRAFITE



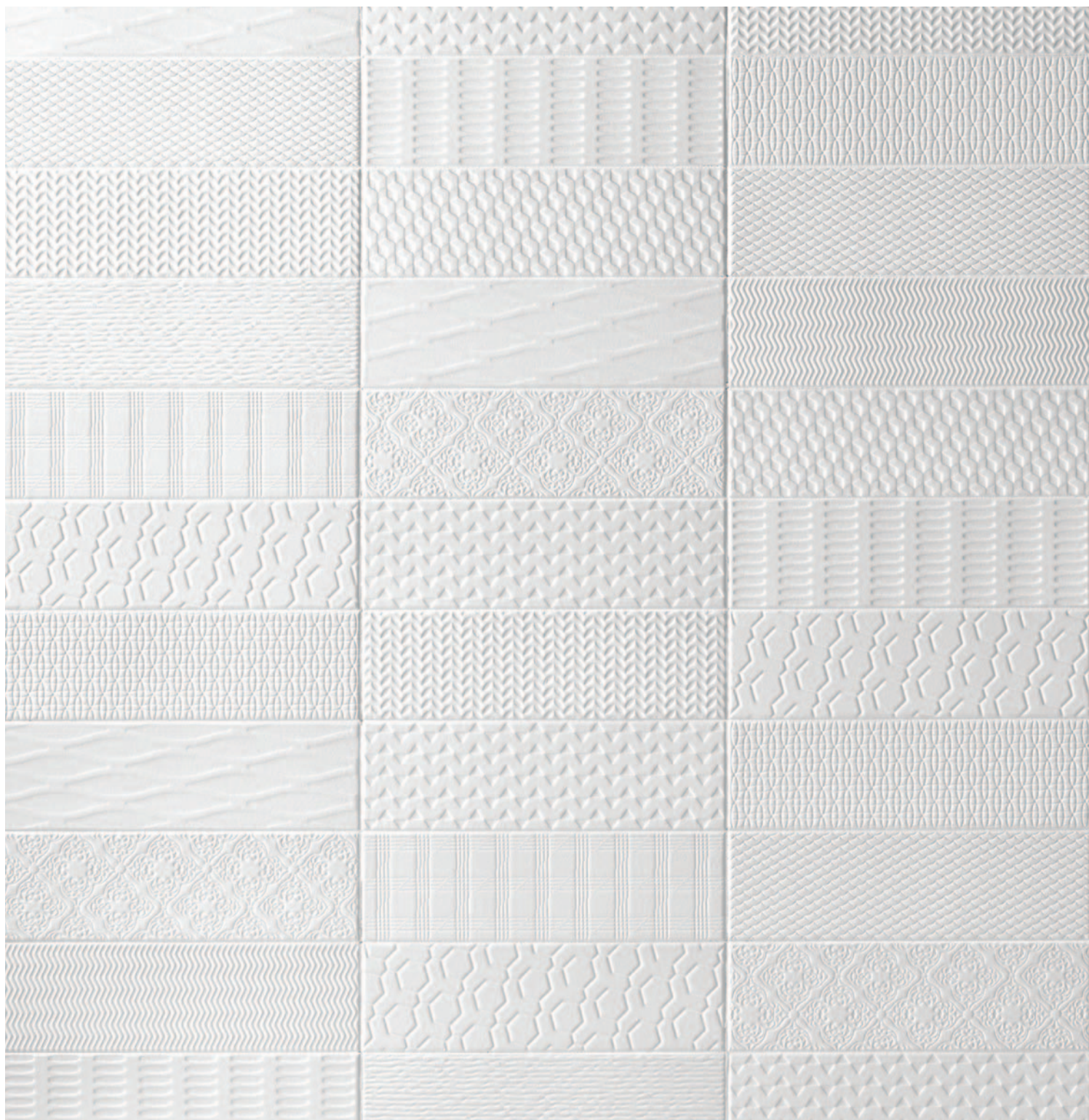


STONY DECORATION
LAVA





STONY PATTERN
WHITE



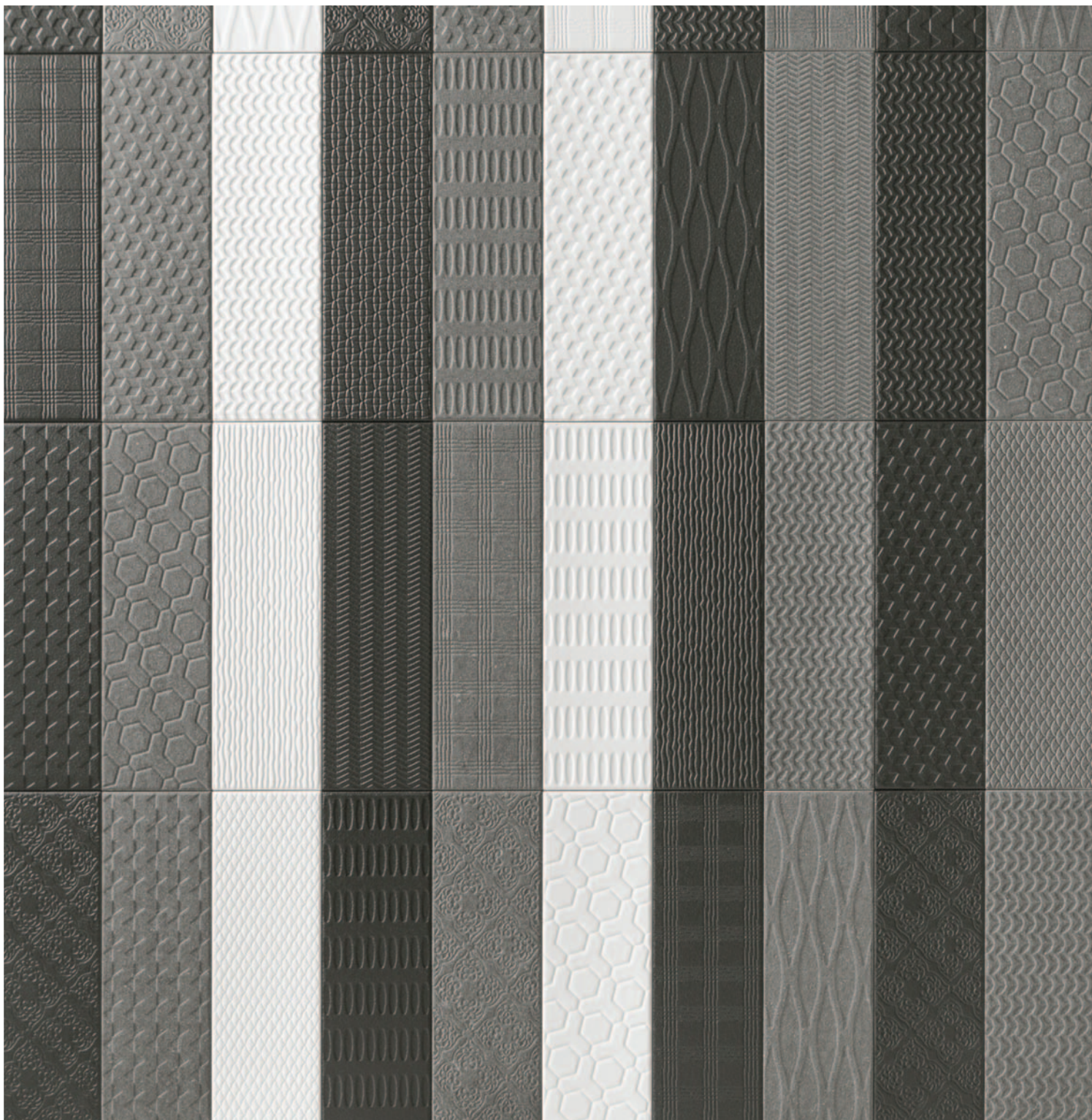


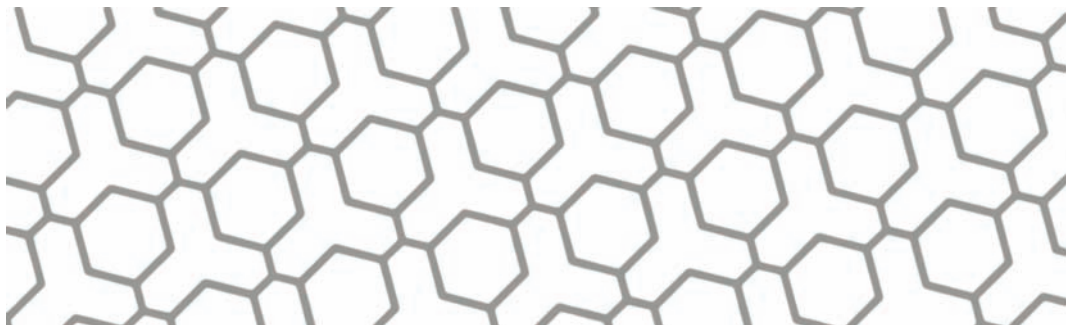
STONY PATTERN
BLACK





STONY PATTERN/DECORATION
GRAFITE/BLACK/WHITE





COLLEZIONE STONY COLLECTION 9x30 / 3,54x11,81

Tutti i 12 pattern e relative decorazioni della collezione Stony sono a pagina 4 e 5
All 12 patterns and related decorations of Stony collection are on page 4 and 5

SABBIA BASE 03



SABBIA PATTERN 01



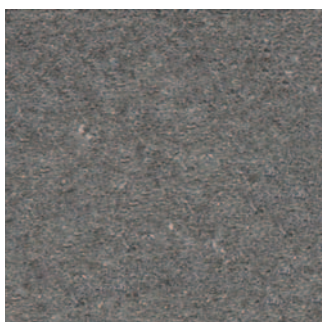
SABBIA DECORATION 02



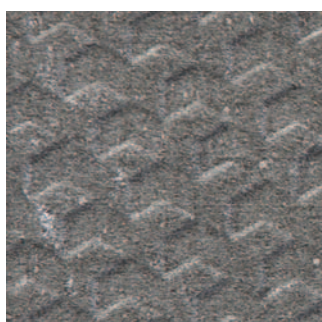
SABBIA COLOR 3 04



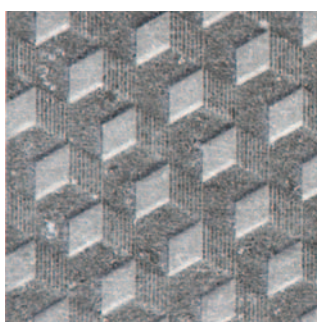
GRAFITE BASE 03



GRAFITE PATTERN 01



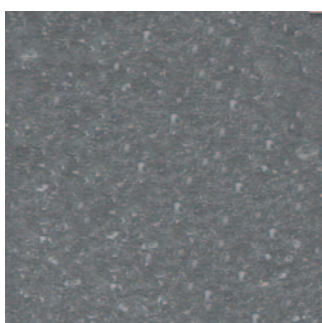
GRAFITE DECORATION 02



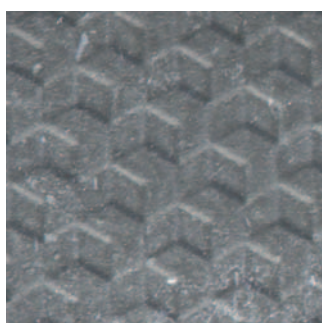
GRAFITE COLOR 4 04



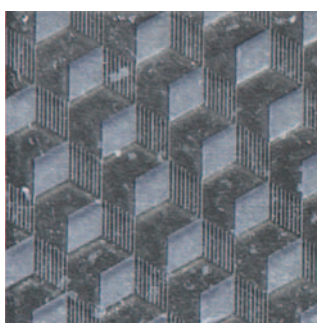
LAVA BASE 03



LAVA PATTERN 01



LAVA DECORATION 02



LAVA COLOR 5 04



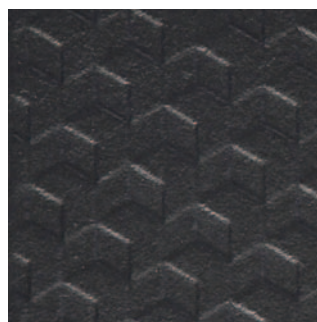
WHITE PATTERN 05



WHITE COLOR 1 04



BLACK PATTERN 05



BLACK COLOR 2 04



SCHEDA TECNICA TECHNICAL DATA

La collezione Stony offre ad architetti e progettisti una molteplicità di combinazioni, grazie alla possibilità di abbinare e mescolare fra loro i quattro elementi – Base, Pattern, Decorazione, Colors – disponibili nei colori Sabbia, Grafite e Lava, a cui si aggiungono Pattern e Colors nelle varianti White e Black.

Stony is a project that offers architects and designers the possibility of infinite solutions, through the combination and mix of four elements – Base, Pattern, Decoration, Colors – available in Sabbia, Grafite and Lava tones, as well Pattern and Colors in White and Black.

Materiale: ceramica smaltata per uso interno

Matter: glazed ceramic for internal use

Finitura: mat / 12 pattern effetto incisione e 12 decorazioni effetto 3D miscelati casualmente*

Finish: mat / 12 patterns etching effect and 12 decorations 3D effect randomly mixed*

Dimensione: 9x30 cm

Size: 3,54x11,81 inch

Spessore: 8 mm

Thickness: 0,31 inch

* i 12 pattern e le 12 decorazioni non possono essere venduti singolarmente ma solo in un mix casuale

* 12 patterns and 12 decorations cannot be sold individually but only as a random mix

COLORI E ASSORTIMENTO COLORS AND CHOICE

	SABBIA	GRAFITE	LAVA	WHITE	BLACK
BASE	●	●	●		
12 PATTERNS	●	●	●	●	●
12 DECORATIONS	●	●	●		
COLORS**	3	4	5	1	2

PACKING

PCS/BOX	MQ/BOX	KG/BOX	BOX/PALLET	MQ/PALLET	KG/PALLET
PCS/BOX	SQM/BOX	KG/BOX	BOX/PALLET	SQM/PALLET	KG/PALLET
30	0.81	12.90	66	53.46	865
30	0.81	12.90	66	53.46	865

** Per l'intera collezione Colors
consulta il relativo catalogo
To the whole Colors collection
consult the relative catalog



CONFINDUSTRIA CERAMICA



Ceramic Tiles of Italy



Ceramica Incontro

Fittile è la nuova linea di produzione di rivestimenti e pavimenti in ceramica di piccolo formato di **Ceramica Incontro** srl, azienda produttrice di battiscopa in ceramica dal 1976.

Fittile is the new small format covering and pavements product line of **Ceramica Incontro** srl, specialized in the production of ceramic skirting since 1976.

Credits

Graphic design, art direction

Lella Povia

Photography

Aldo Dith

Copywriting

Fabio Nardulli

Offset printing

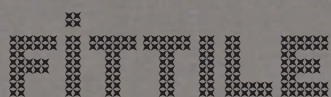
Stampa Sud

Furnishing accessories

Domenico D'Introno srl

Strippoli Mobili Corato

Designed and printed in Italy,
March 2018



ITALIAN TILES DESIGN

S.P. 231 Km. 34,200
70033 Corato Ba Italy
phone +39 080 8983701
fax +39 080 8983701
e-mail: info@fittile.it
www.fittile.it