

GONE

ORNAMENTA.COM

DECORATIVE RETRÒ
PATTERNS
20X20 //
GRES PORCELAIN //

ORNAMENTA®

CEMENTINE BLACK&WHITE

*interpretation of a classic such
as hydraulic cement tiles*

SUMMARY

COLOURS

pag. 4 | 5

THE COLLECTION

pag. 6 | 39

TECHNICAL INFO

pag. 41 | 45

CREDITS

pag. 46

ORNAMENTA.COM

COZY



vanilla



hazelnut



chocolate

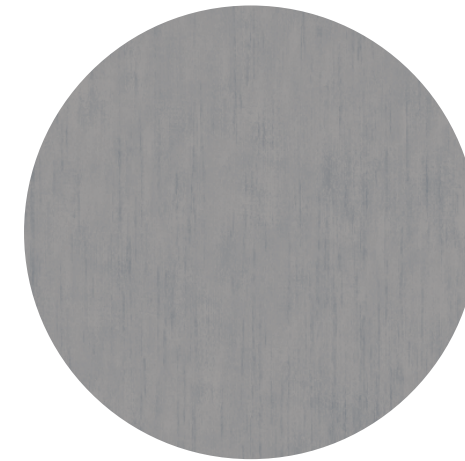


12 patterns

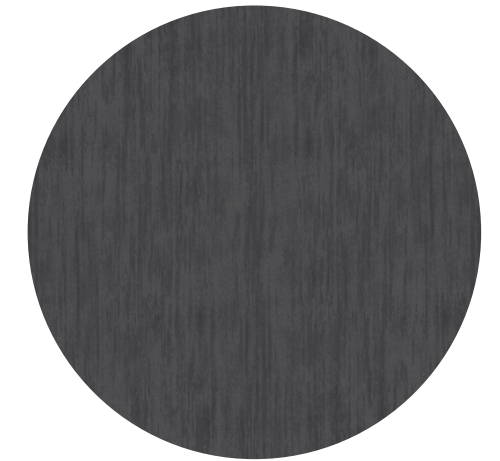
GREYSCALE



milk



powder



coffee



12 patterns

*I colori e le caratteristiche estetiche dei materiali illustrati nel presente catalogo sono da ritenersi puramente indicativi.
Colours and aesthetical features of the materials as illustrated in this catalogue are to be regarded as mere indications.

GONE



VANILLA



HAZELNUT



CHOCOLATE



MILK



POWDER



COFFEE

Ecco la nostra interpretazione su un grande classico come le “cementine idrauliche”. Abbiamo deciso di esplorare la gamma del bianco e del nero con la presenza di un unico colore intermedio per coordinarli.

I “non colori” diventano protagonisti di una superficie segnata dallo scorrere del tempo in cui si intrecciano patterns dal linguaggio prevalentemente geometrico.

Here is our interpretation of a classic such as hydraulic cement tiles. We decided to explore the black and white range with the presence of a single intermediate color to coordinate them. The “non-colors” become protagonist of a surface marked by time with geometric patterns.

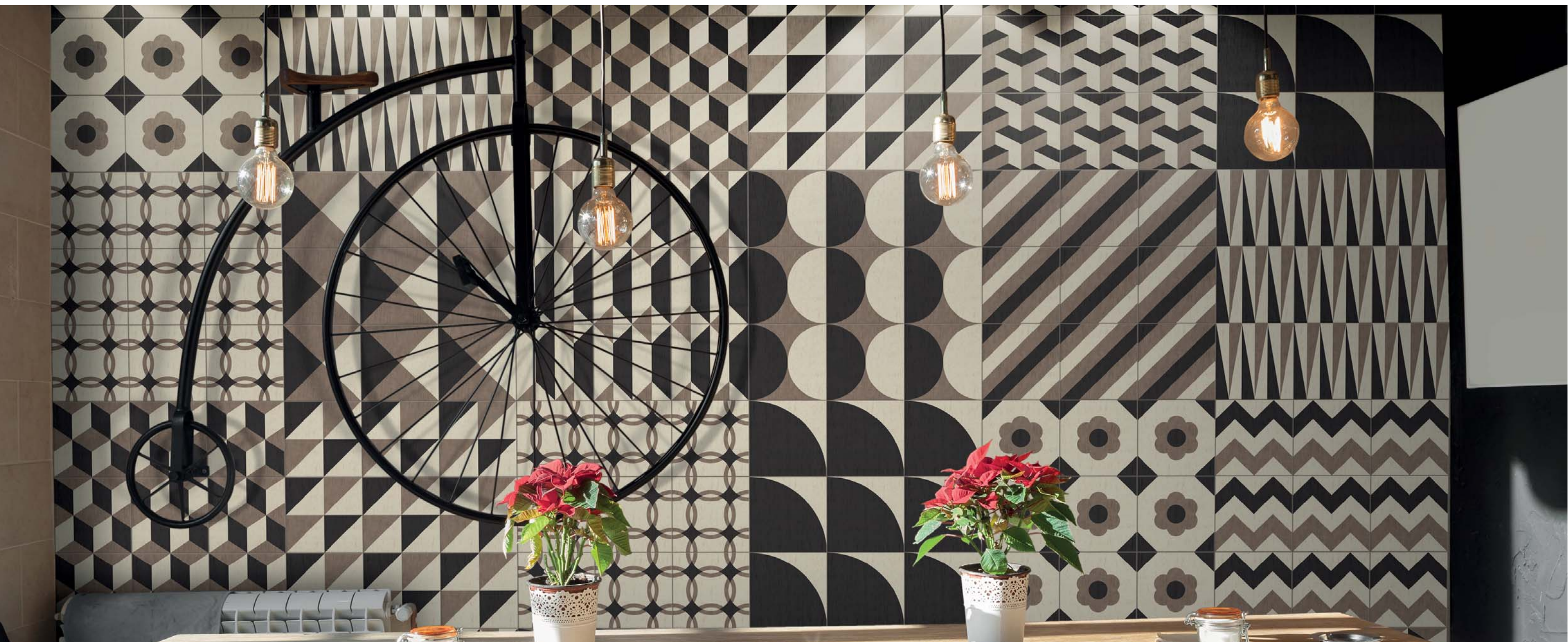
CEMENT TILES

20x20 cm - 8”x8”

6 tinte unite + 12 patterns
decorativi in gres porcellanato sia
da pavimento che da rivestimento.

*6 plain tiles + 12 decorative
patterns in HD gres porcelain both for
floor and wall tiles.*

PATCHWORK OF 12 PATTERNS



12 PATTERNS DECORATIVI

20x20 - 8"x8"

12 patterns decorativi 20x20 in gres porcellanato rettificato sia da pavimento che da rivestimento design by ORNAMENTA®, secondo i trend della moda e dell'Interior Design più attuali nelle colorazioni Cozy e Greyscale. Tutti i moduli possono essere utilizzati "seamless", senza soluzione di continuità, oppure mixandoli per ottenere patchwork contemporanei. In GONE la materia porta i segni del tempo che è "passato", come fosse consumata per realizzare ambienti sofisticati ma informali dall'atmosfera calda e accogliente in abbinamento a materiali grezzi quali legno, acciaio e cemento e arredi d'epoca. Su una palette cromatica neutra, l'interior eclettico trova la sua giusta base, in un mix&match di ispirazioni.

12 DECORATIVE PATTERNS

20x20 cm - 8"x8"

Our "Gone" collection has been made by 12 20x20 Cozy and Greyscale ornamental patterns on porcelain and rectified gres, both for wall & floor tiles, designed by Ornamenta, following the current fashion and interior design trends. Each pattern can be used seamlessly or mixed, to create modern patchworks. In "Gone" the tile shows signs of the time, as it were worn out. With a neutral colour palette, in mix&match, interior designers can find their correct base to achieve sophisticated and informal locations, with a warm and welcoming atmosphere; this base could be combined also with coarse material as wood, steel, cement and vintage furniture.



COZY

GREYSCALE



ROMAN



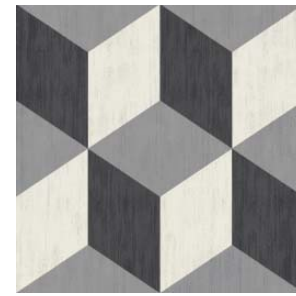
KITCHENETTE



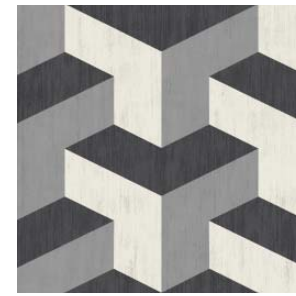
CROSS



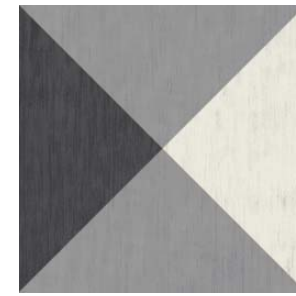
DIAGONAL



ROMAN



KITCHENETTE



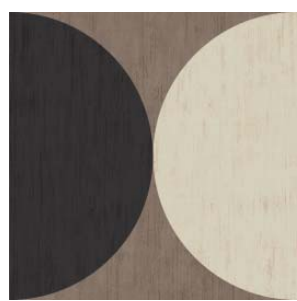
CROSS



DIAGONAL



CHEVRON



HALF MOON



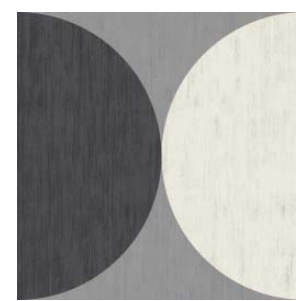
TRIANGLE



BARCELONA



CHEVRON



HALF MOON



TRIANGLE



BARCELONA



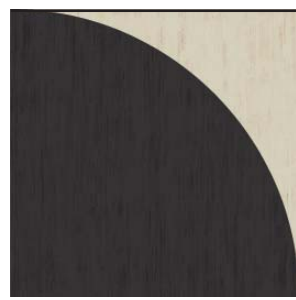
HOOP



BACKGAMMON



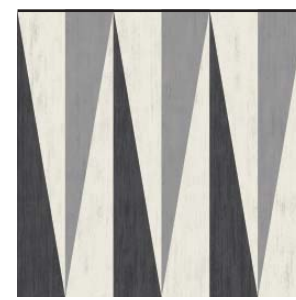
STUDIO



MOON



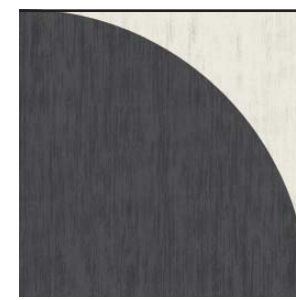
HOOP



BACKGAMMON



STUDIO



MOON

SEAMLESS PATTERNS.

USE THEM ONE BY ONE OR RANDOM.



ROMAN | COZY



COZY



KITCHENETTE | GREYSSCALE



CROSS | COZY



GREYSSCALE





HOOP | COZY



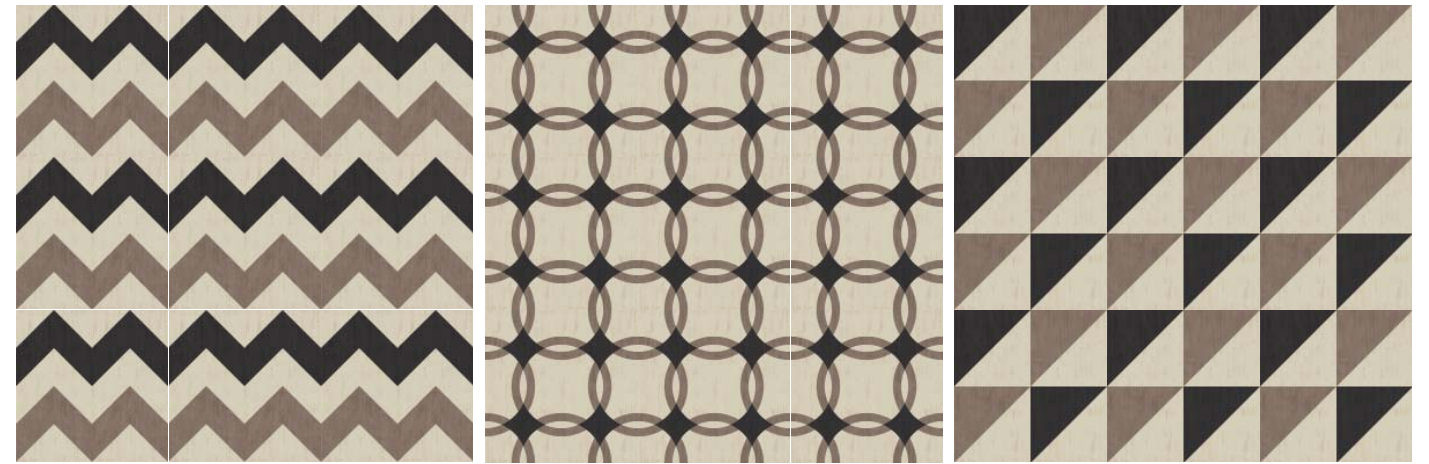
TRIANGLE | COZY



TRIANGLE | GREYSCALE



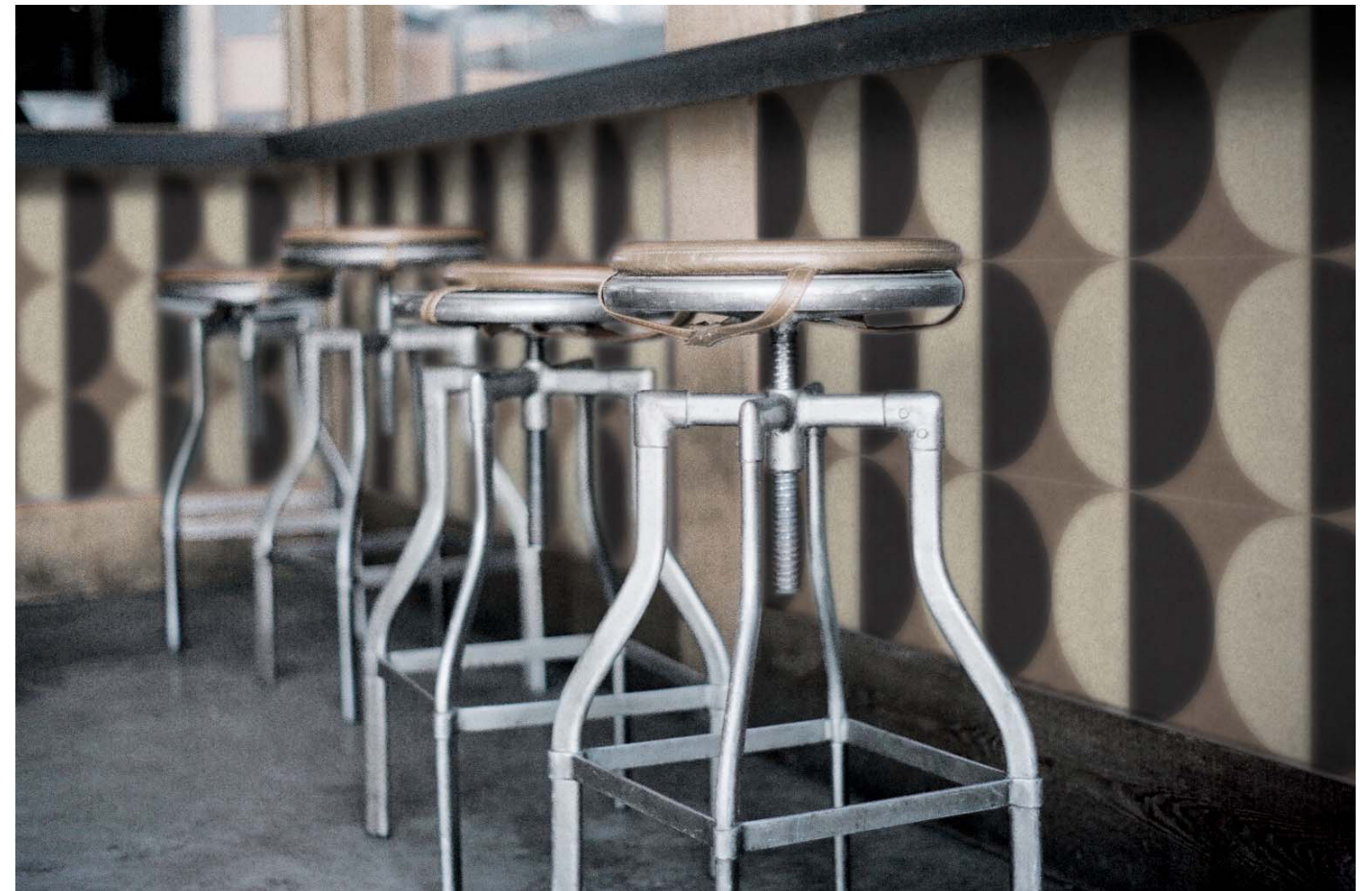
DIAGONAL | GREYSCALE



MOON | COZY



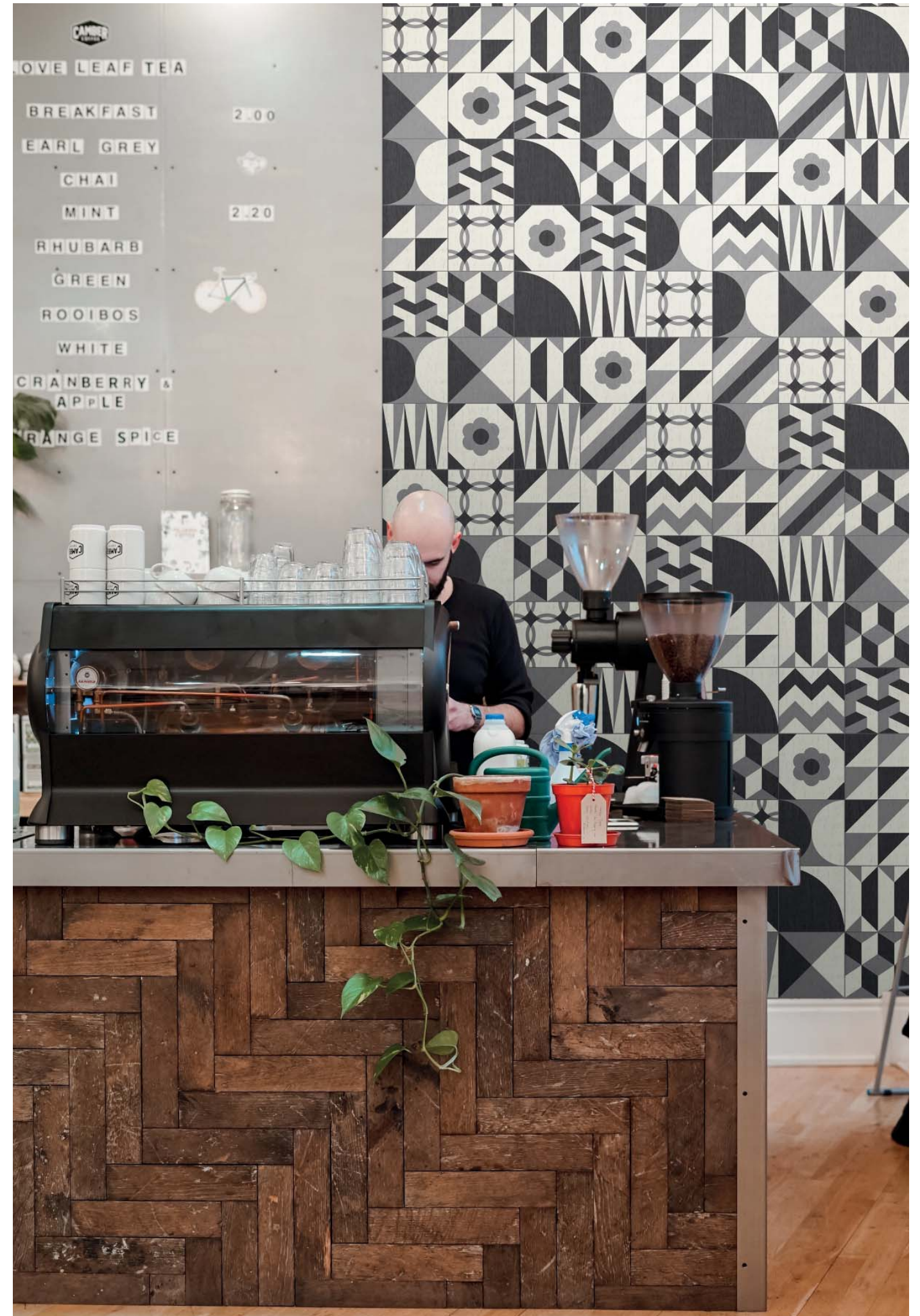
BARCELONA | COZY



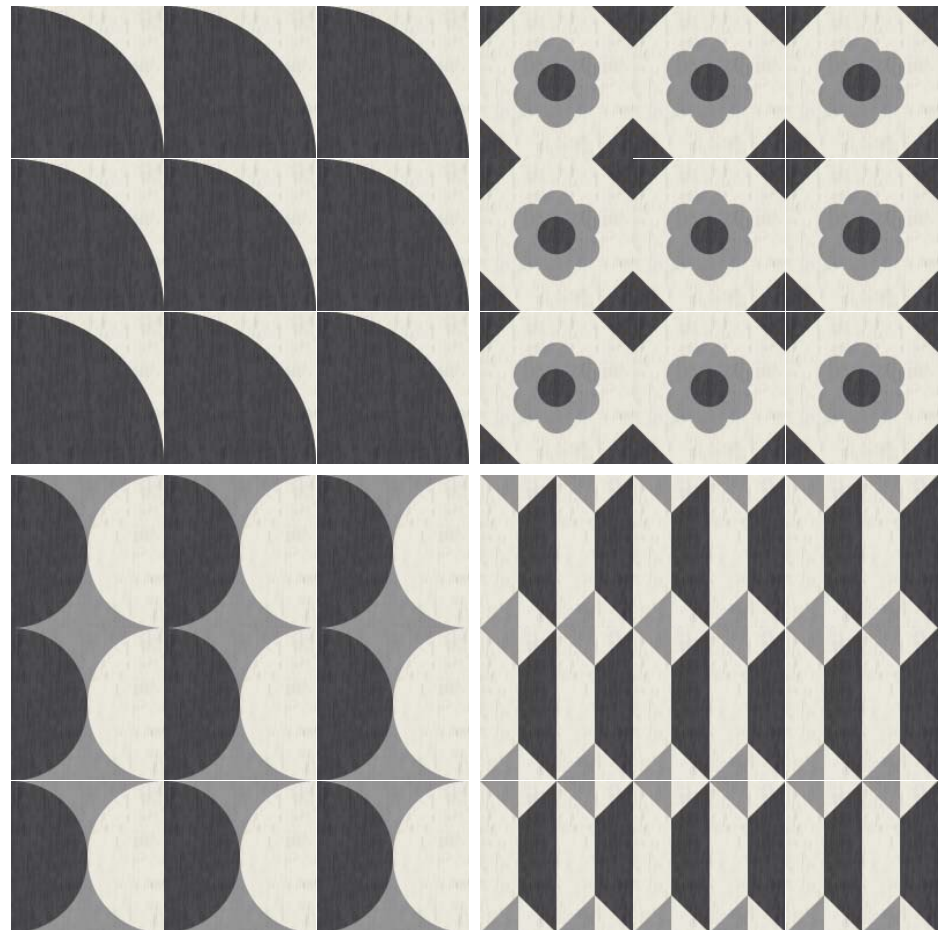
HALF MOON | COZY

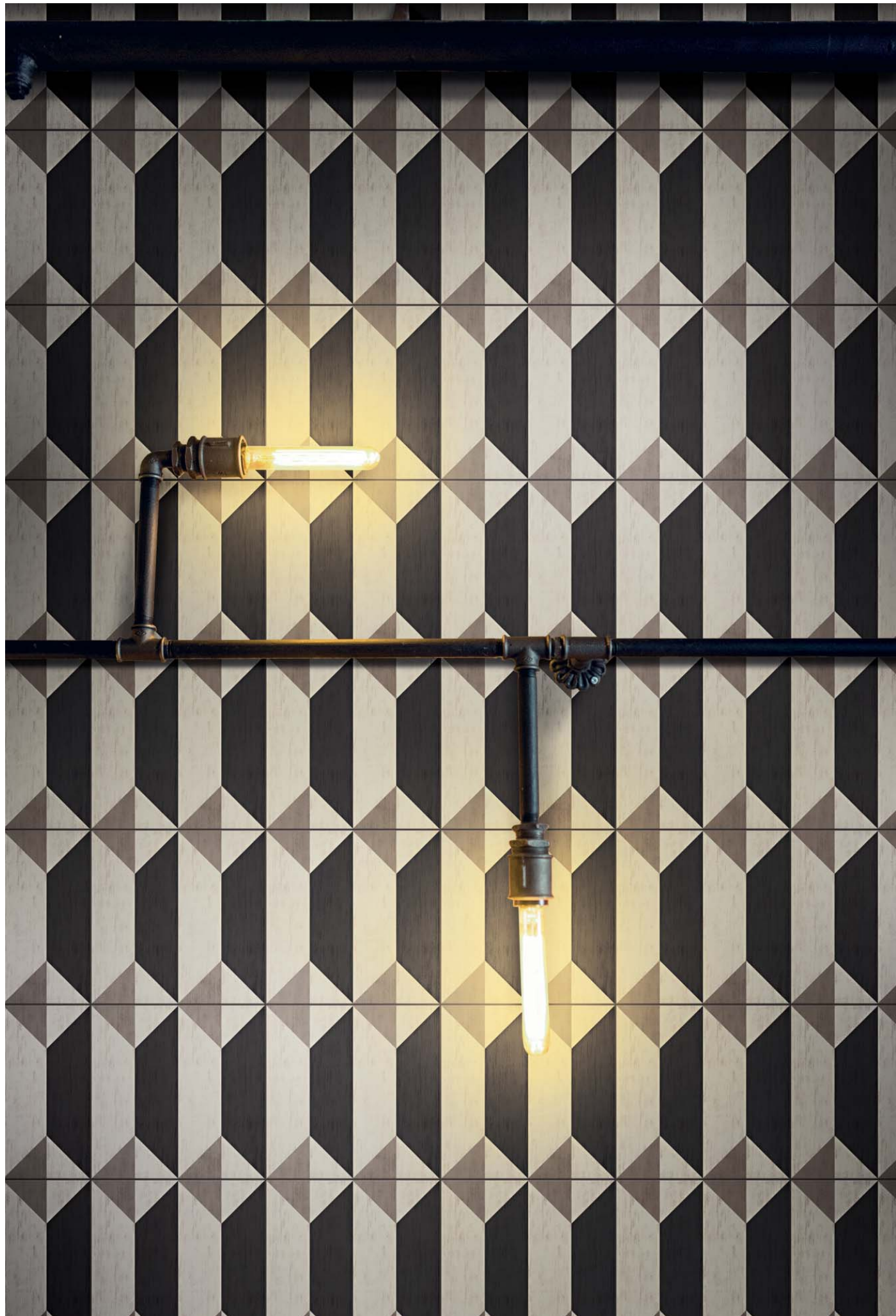


BARCELONA | GREYSCALE

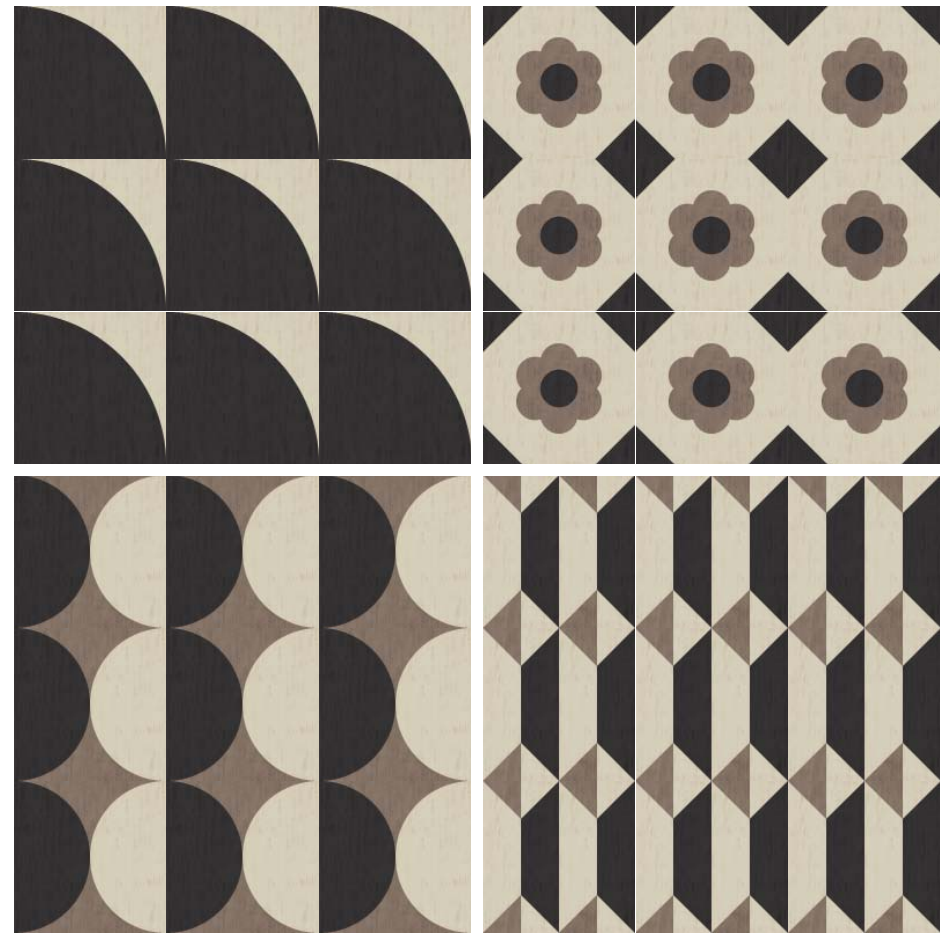


PATCHWORK | GREYSCALE





STUDIO | COZY





PATCHWORK PATTERNS | COZY

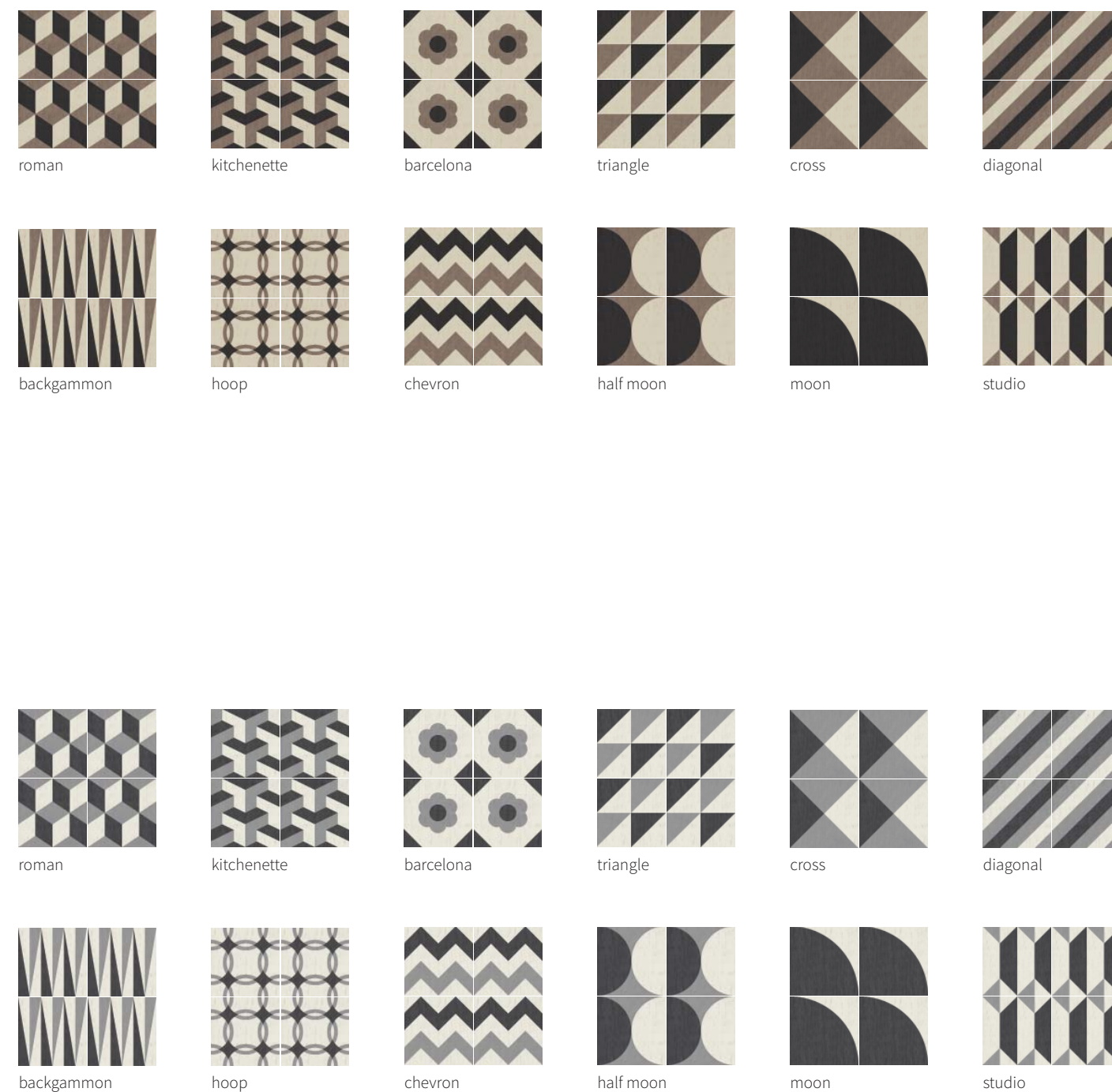
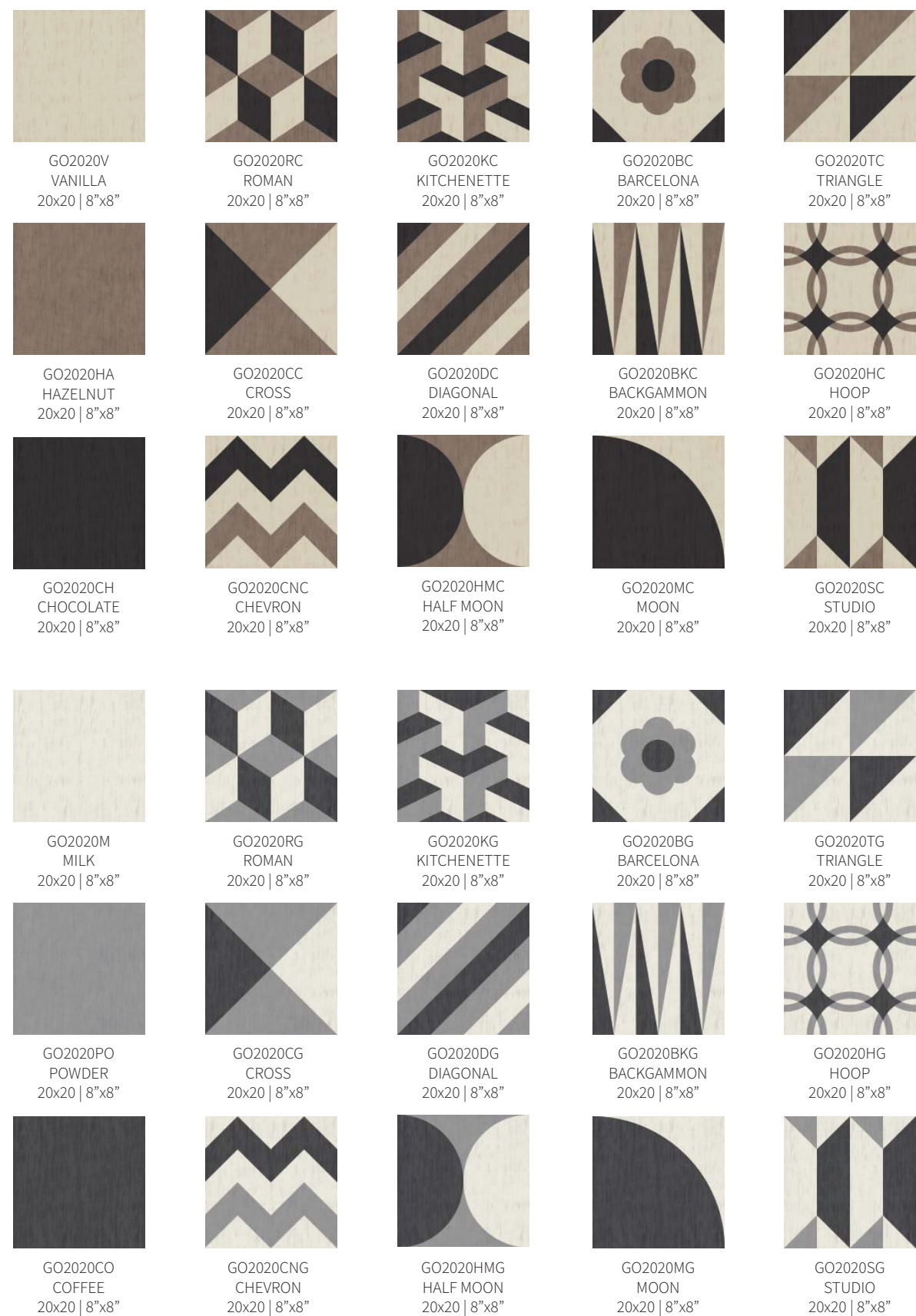




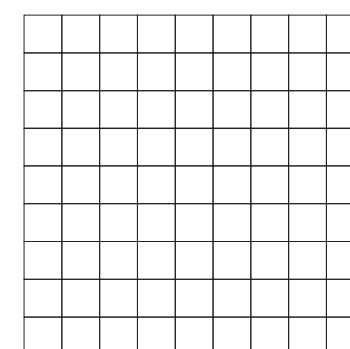
PATCHWORK PATTERNS | COZY



TECHNICAL INFO



SCHEMI DI POSA / LAYOUT SETTINGS



Si consiglia di posare il prodotto utilizzando un distanziale da 2mm.
We suggest to lay the product by using a spacer of 2mm.

MISURE E PESI

weight and dimensions

poids et dimensions

größe und gewichte

medidas y pesos

Dimensione		
Size	20x20	
Format	8”x8”	
Tamaño		
Spessore		
Thickness	10 mm	
Épaisseur		
Stärke		
Espesor		
Peso		
Weight	0,96 kg	
Poids		
Gewicht		
Peso		
Pezzi per scatola		
Pieces per carton	16	
Pièces par carton		
Stück pro Karton		
Unidades por caja		
Quantità per scatola		
Quantity per carton	0,67 sqm	
Quantité par carton		
Quantität pro Karton		
Cantidad por caja		
Peso per scatola		
Weight per carton	15,41 kg	
Poids par carton		
Gewicht pro Karton		
Peso por caja		
Scatole per paletta		
Boxes per pallet	96	
Cartons par palette		
Karton pro palette		
Cajas por paleta		
Quantità per paletta		
Quantity per pallet	64,32	
Quantité par palette	sqm	
Quantität pro palette		
Cantidad por paleta		
Peso per paletta		
Weight per pallet	1494,36 kg	
Poids par palette		
Gewicht pro palette		
Peso por paleta		

Giunto	Stucchi	Grado di variazione cromatica	
Joint	Grouts	Colour shade variation	ASTM C137.1
Joint	Joints	Degré de variation chromatique	V0 - V4
Fugenbreite	Fugenmassen	Grad Der Farbabweichung	V01
Junta	Pasta de rejuntar	Grado De Variación Cromatica	

Avvertenze
Non saranno accolte contestazioni per danni visibili prima della posa. I colori dei materiali illustrati nel presente catalogo sono da ritenersi puramente indicativi. I dati presenti nella tabella “Misure e Pesi” sono aggiornati al momento della stampa del catalogo, pertanto i dati elencati possono subire variazioni.

Advice
Claims on items which have already been laid will not be accepted for any damage visible before laying. Colours of the materials as illustrated in this catalogue are to be regarded as mere indications. The details present in the table “Weight and Dimensions” are updated at the time the catalogue is printed, therefore the datas may change.

Avertissements
Ils ne seront pas acceptées les réclamations pour dommages visibles avant l’installation. Les couleurs des matériaux illustrés dans ce catalogue sont purement indicatives. Les données dans le tableau «poids et mesures» est correcte au moment de l’impression du catalogue, pourquoi les données peuvent être modifiées.

Warnungen
Sie werden nicht vor der Installation akzeptiert Ansprüche auf sichtbare Beschädigungen werden. Die Farben der Materialien, die in diesem Katalog dargestellt sind rein indikativ. Die Daten in der Tabelle “Maße und Gewichte” ist korrekt zum Zeitpunkt der Druck des Katalogs, deshalb werden die aufgelisteten Daten geändert werden können.

Advertencias
No se aceptarán reclamaciones por daños visibles antes de la instalación. Los colores de los materiales descritos en este catálogo son meramente indicativos. Los datos de los “Pesos y Medidas” tabla es correcta en el momento de imprimir el catálogo, por lo tanto, los datos enumerados pueden ser alterados.

CARATTERISTICHE TECNICHE

technical features

caractéristiques techniques

technische eigenschaften

características técnicas

	NORMA STANDARD	VALORI LIMITI PREVISTI ESTABLISHED LIMITS VALEURS LIMITES PRÉVUES VORGESEHENE GRENZWERTE VALORES LIMITE PREVISTOS	VALORI RILEVATI MEASURED VALUES VALEURS MESUREES MESSWERTE VALOR MEDIDO
Lunghezza e larghezza Lenght and width Longueur et largeur Länge und Breite Longitud y anchura	ISO 10545.2	± 0,6%	± 0,6%
Rettilineità degli spigoli Straightness of sides Rectitude des arêtes Geradlinigkeit der Kanten Rectitud de los cantos	ISO 10545.2	± 0,5%	± 0,5%
Planarità Flatness Planéité Ebenflächigkeit Planeidad	ISO 10545.2	± 0,5%	± 0,5%
Assorbimento d’acqua Water absorption Absorption d’eau Wasseraufnahme Absorción de agua	ISO 10545.3 ASTM C373	< 0,5%	< 0,5%
Resistenza agli sbalzi termici Thermal shock Choc thermique Thermoschock Choque termal	ISO 10545.9 ASTM C484	Resistente Resistant Résistant Beständig Resistente	Resistente Resistant Résistant Beständig Resistente
Resistenza agli attacchi chimici Chemical resistance Résistance chimique Chemische Resistenz Resistencia química	ISO 10545.13 ASTM C650	Conforme Complies with the standards Conforme aux normes Anforderungenerf erfüllt Conforme con las normas	Conforme Complies with the standards Conforme aux normes Anforderungenerf erfüllt Conforme con las normas
Resistenza all’abrasione Deep resistance Résistance à l’abrasion Abriebfestigkeit Resistencia a la abrasión	ISO 10545.7 ASTM 1027	100 PEI 0 150 PEI I 600 PEI II 750 - 1500 PEI III 2100 - 6000 - 12000 PEI IV > 12000 PEI V	VANILLA - PEI IV HAZELNUT - PEI III CHOCOLATE - PEI II
Resistenza alle macchie Stains Resistance Résistance aux taches Fleckenbeständigkeit Resistencia a las manchas	ISO 10545.14 ASTM CC1378	≥ Classe 3 ≥ Class 3 ≥ Classe 3 ≥ Klasse 3 ≥ Categoria 3	Conforme Complies with the standards Conforme aux normes Anforderungenerf erfüllt Conforme con las normas
Resistenza allo scivolamento Antislip value Résistance au glissement Rutschhemmung Resistencia al deslizamiento	DIN 51130	da R9 a R13 from R9 to R13 de R9 à R13 von R9 bis R13 de R9 a R13	R10
	D-COF	> 0,42	> 0,42
Resistenza al gelo Frost resistant Résistant au gel Frostbeständig Resistente a las heladas	ISO 10545.12 ASTM C1026	Conforme Complies with the standards Conforme aux normes Anforderungenerf erfüllt Conforme con las normas	Conforme Complies with the standards Conforme aux normes Anforderungenerf erfüllt Conforme con las normas
Resistenza alla rottura Breaking strenght Résistance à la rupture Biegezugfestigkeit Resistencia a flexión	ISO 10545.4	≥ 28 N/mm ²	Conforme Complies with the standards Conforme aux normes Anforderungenerf erfüllt Conforme con las normas

GONE

CREDITS

EDITION

February 2017
© All rights reserved

ART DIRECTION

d-segno studio
di Davide Tonelli
d.tonelli@d-segno.com
linkedin.com/in/davidetonelli/

COMPANY

ORNAMENTA® Headquarter
Via Mosca, 1 - 41049
Sassuolo - (MO) Italia
T. +39 0536 867411
info@ornamenta.com

ORNAMENTA® Production unit
via Stradone Secchia 29,
42014 Roteglia - (RE) Italia
T. +39 0536 867411

COMMUNICATION & PR.

ORNAMENTA Press Office
press@ornamenta.com

ORNAMENTA.COM

ORNAMENTA®

A.D. Davide Tonelli

ORNAMENTA®
Via Mosca, 1 - 41049
Sassuolo - (MO) Italia
T. +39 0536 867411
F. +39 0536 803937
info@ornamenta.com
IT 00831670369
Gamma Due S.p.A.

ornamenta.com

@ornamentaceramics